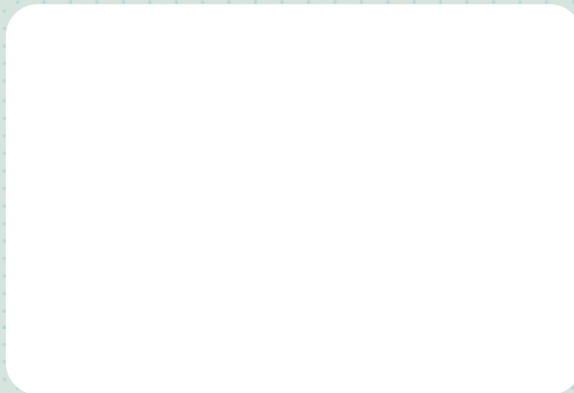


Introducing TruHearing®, your exclusive provider for hearing health benefits through Central Midwest Regional Council of Carpenters Welfare Fund (Fund).

Save this card for future reference.



TruHearing®

Dear member,

At CMRCC Welfare Fund, we're always looking for ways to add value to your benefits and to help improve your health and well-being. That's why we want to remind you of our exclusive partnership with TruHearing®, the market leader in hearing healthcare.

You and your covered dependents have access to a comprehensive hearing exam (\$0 copay), plus a variety of the latest hearing aid models and technologies through TruHearing. With over 8,850 provider locations nationwide and a phone number dedicated to our members, it's never been easier to access hearing health services.

In addition to high-quality hearing aids featuring top-of-the-line technology from the six leading manufacturers, your hearing aid purchase also includes

- + 60-day, risk-free trial
- + 1 year of follow-up visits
- + 80 free batteries per non-rechargeable hearing aid
- + Full 3-year manufacturer warranty

To access this benefit, you must use a TruHearing provider. Therefore, please call TruHearing for information regarding providers or to set up an appointment. Please see the enclosed flyer for more details.

Sincerely,

Central Midwest Regional Council of Carpenters

It's simple to get started.



Call
1-833-723-7720
TTY: 711

TruHearing will work with us to verify your eligibility.



Schedule an exam

TruHearing will find an in-network provider near you and book your exam.



Go to your exam

You'll take a variety of tests that typically take about an hour to complete.



Order hearing aids

Your provider will help you find the right model to match your needs.



Fitting and follow-up

Return to your provider for programming and care instruction.

Use this space for taking notes during your phone call with TruHearing:

.....

.....

.....

.....

.....

.....

.....

.....

